

ACADEMIC NEWS

- The opening of the *Cantab Capital Institute for the Mathematics of Information* was featured in an article in the [Financial Times](#) (13/05/2016), titled, 'Hedge funds and Universities find mutual benefit from closer ties'.
- *Stephen Hawking* has recently been honoured by the BBVA Foundation (a global organisation that celebrates world-class research and artistic creation) with the [BBVA Foundation Frontiers of Knowledge Award](#) for his research into galaxy formation. The BBVA Foundation President, Francisco González, presented the award in DAMTP ahead of the official ceremony on *Tuesday 21st June*.

ANNOUNCEMENTS

CUSU – The Big Cambridge Survey [For current students]

The Big Cambridge Survey is run by CUSU every year and it open to all current students at the University and collects information on the student experience at Cambridge, both academic and pastoral.

If you [complete The Big Cambridge Survey](#) there is a chance to win £100 and help CUSU change the University! CUSU uses the responses to shape their work throughout the year. The Survey is open until *Tuesday 14th June*.



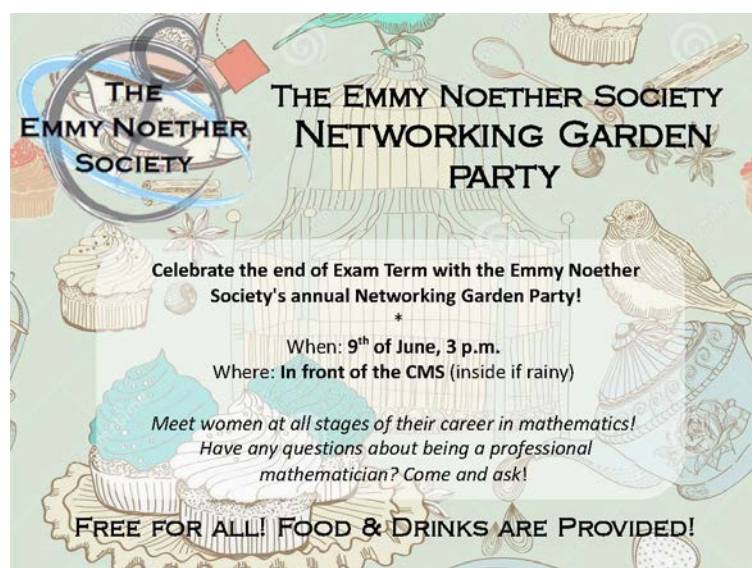
Office of Postdoctoral Affairs (OPdA) Mentoring Scheme [For Postdocs]

The Office of Postdoctoral Affairs (OPdA) is [piloting a mentoring scheme for postdocs](#) across all disciplines. The scheme is based on a formal academic matching model with a mentor drawn from outside a postdoc's core discipline area. Full details are available on the Office of Postdoctoral Affairs website.

- The pilot will be opened to the postdoctoral community on *Wednesday 1st June 2016*.
- There will be an [informational event](#) on *Wednesday 15th June, 5:30pm – 7.00pm, 16 Mill Lane*, with drinks and snacks.
- The Mentee [application](#) deadline is *9.00am on Monday 20th June*. Please be aware that resources are limited, therefore places will be first come first serve. There is [mandatory training](#) for accepted applicants at the *Postdoc Centre Eastwood Room, 16 Mill Lane, The Basement on Wednesday 29th June, 11.00am and Thursday 30th June, 1.00pm*.

The pilot coordinator is Libbi Johnson (Libbi.Johnson@admin.cam.ac.uk). For more information please email mentoring.opda@admin.cam.ac.uk.

EVENTS



Equality & Diversity Festival of Wellbeing

Monday 27th June – Friday 8th July

Do you fancy a tour of a College garden or a free Zumba session?

Are you interested in Mentoring or finding out more about Mental

Health? Take some time out of your busy schedule to enjoy the wide

range of events and activities organised for University staff during the annual Festival of Wellbeing.

Events take place between Monday 27th June and Friday 8th July. With more than 100 activities scheduled over two weeks and across the different University sites, there is a packed programme with something for everyone! The [full programme](#) is now available and most events are free of charge (please see individual listings for any cost details). Bookings are now open and everyone is welcome.



Improving the research process - discussing an 'open research' position

Wednesday 8th June, 3.00pm-4.30pm at The Department of Engineering, Lecture Room 6.

How can we ensure that researchers are rewarded for the quality of their research and not only for the impact factor of the journals in which they publish? What needs to happen so the quality of the whole research process is taken into account when considering recruitment or academic promotions?

Could our University have a position to encourage better transparency and openness in research? Could this solve some of the current problems experienced in the academic sector?

[The Office of Scholarly Communication](#) would like to consult researchers on a number of ideas geared towards helping researchers to make all of their work openly available and rewarding the quality of the whole research process. They need researchers to tell them what the current problems in academic research are and what ideas would be useful to include in a planning document. Everyone is welcome to come to this event and contribute their ideas. Please register [here](#).

Cambridge University Botanic Garden

Family Event: Moth Monitoring

On Saturday 4th June, 11am – 3.00pm there will be a free, drop-in event to find out about [moth monitoring](#). There will be a moth trap to look at and hopefully some moths. There will also be an opportunity to find out all about these amazing insects and do some moth inspired artworks. Normal Garden Admission apply for Adults.

Museum of Archaeology & Anthropology

Half Term event – Children's Games: Hide and Seek Exhibition: Looking for Children in the Past

Tuesday 31st May – Friday 3rd June, 11.00am – 4.00pm

Ever wondered what children did for fun before computers and TVs? Visit [the exhibition](#) and then try some of their games-ancient and new. All games will be inspired by objects in the exhibition and Peter Bruegel's painting 'Children's Games' (1560), which shows 250 children playing 80 different games. There will be different games to play on different days. This is a free drop-in event.

Sedgwick Museums of Earth Sciences

Half Term event – Dino door hangers

On Wednesday 1st June, 10.00am – 1.00pm the museum will be hosting this [free family drop-in event](#). They invite you to get creative and make your own dinosaur door hanger.



GENERAL INFORMATION

New members of Administrative Staff

We are delighted to announce that the following people will be joining DAMTP over the next few weeks:

- *Mr Alex Boggis* will start on *Wednesday 1st June* as our new Trainee Computer Technician (sandwich placement) taking over from Robert Barczyk.
- *Mrs Sarah Jefferys* will start on *Monday 6th June* as the new *Faculty Administrator*. She will be based in room *B1.29* and will be working mornings, Monday to Friday. Her contact details will be as follows:
Tel: 37854
Faculty Board email: secretary.board@maths.cam.ac.uk
General email: sf311@cam.ac.uk
- *Ms Rachel Furner* will start on *Monday 13th June* as the new *Institute and Centre Coordinator* (working 50% FTE for Dr Carola Schoenlieb's Cantab Capital Institute for the Mathematics of Information, and 50% FTE for Professor John Aston's EPSRC Centre for Mathematical and Statistical Analysis of Multimodal Clinical Imaging), both based in the Faculty of Mathematics. She will be based in room *F0.09* and her contact details will be as follows:
Tel: 38177
Email: raf59@cam.ac.uk

Mathematics and Big Data Showcase event 20th April 2016



Overview

The event showcased the diversity and impact of Mathematical and Big Data research at Cambridge to people from a wide range of organisations. The day was a resounding success, attracting 180 delegates, half of which were from businesses representing sectors such as aerospace, automotive, banking, chemical industry, computing, construction, financial services, insurance and risk, medical systems, oil industry, pharmaceuticals, retail and telecommunications. In addition, there were delegates from legal firms, government agencies and policy makers.

Highlights

The programme included nine talks presented in three sessions, chaired by Professors Nigel Peake, Anne Davis and Gabriel Paternain.



**New Materials By Design:
Professor Mike Cates**



**The Particulars of Particulates:
Dr Nathalie Vriend**



**Analysis of Motion Data for Healthcare
and Rehabilitation: Dr Joan Lasenby**



**Extreme Universe Computing:
Professor Paul Shellard**



**Quantum Computing:
Professor Richard Jozsa**



**Calculating Implied Volatility:
Dr Mike Tehranchi**



**Seeing More in Images - a
Mathematical Perspective: Dr
Carola-Bibiane Schönlieb**



**Computational Biology:
Dr Stephen Eglén**



**Publicising Surgeons'
Performance: the Maths of
Naming and Shaming: Professor
David Spiegelhalter**

In addition, the exhibition featured 50 posters and two tours. Researchers were on hand to discuss their projects and there were opportunities for delegates to have guided tours of the GK Batchelor Fluid Dynamics Laboratory and the COSMOS Computing Facility.



A large number of people stayed on for the evening drinks reception to continue networking, with some remaining until 7:30pm.



For more photographs and videos of the talks please see the links provided below:

[Mathematics Showcase Event Photographs](#)

[Mathematics Showcase Event Videos](#)

Feedback

Many positive comments were received both verbally and via the feedback forms. Overall, 87% of respondents said the event fully or mostly met their expectations. The same number said that the talks were interesting, engaging and relevant to their area of work. Participants also commented that the poster session, tours and networking opportunities were great. All talks and speakers were mentioned in the feedback, showing that breadth of subjects and content enabled all participants to take away something. The tours were an added incentive and enjoyed by all. A couple of specific quotes from participants include:

“Overall the breadth and diversity of projects was interesting to see as it gave some idea of techniques other researchers are using and how.”

“Great talks, pitched at the right level. Great posters on a diverse range of subjects”

Contacts and Follow-up

As a result of the event, many new contacts were made and several discussions have already started between academics and various organisations.

Please let Stephanie North (sn468@cam.ac.uk) know of any valuable connections made arising from the Showcase, so that we can measure the benefits.

Acknowledgements

Many thanks are due to the multitude of people who made the day such a success: the Speakers and Chairs, G K Batchelor Laboratory Tour Guides, COSMOS Tour Guides, Poster Exhibitors, Facilities Team, Administration Team.

Many thanks also to the organisers: Turing Gateway to Mathematics, Cambridge Big Data, DAMTP and DPMMS.

We are most grateful for financial support from the EPSRC Impact Acceleration Account, DAMTP, DPMMS, National Physical Laboratory and Cambridge Big Data.

Stephanie North,
Mathematics Knowledge Transfer Facilitator
26th May 2016