

# FACULTY NEWS BULLETIN

17 March 2022

## ANNOUNCEMENTS

### PhD Approvals

Many congratulations to the following students who have recently completed their PhD's:



Edward Ayers	DPMMS	A Tool for Producing Verified, Explainable Proofs
Leo Middleton	DAMTP	Un-mixing the Ocean: Double Diffusion and Turbulence in Polar Oceans
Peter Van Hintum	DPMMS	Combinatorics and Metric Geometry

Congratulations to Rajen Shah who has been awarded the [RSS Guy medal in bronze](#) for pioneering research on large-scale statistical learning, including important contributions to goodness-of-fit testing, interaction search and conditional independence testing. This is awarded to a fellow of the Society in respect of excellent work presented to any conference or meeting run by the Society or published in any of the Society's journals.

Congratulations to Anders Hansen whose book "Compressive Imaging: Structure, Sampling, Learning" (CUP, 2021) is a finalist (1 out of 3) for the Association of American Publishers Awards for Professional and Scholarly Excellence ([PROSE Awards](#)) 2022 in the Computing & Information Sciences category.

### Plus Update

The collaboration between *Plus* and the INTEGRAL project has enabled the team to communicate their work to a general audience, supporting some of the early career researchers in their first opportunity of public engagement. The result is a collection of articles and a podcast exploring INTEGRAL's work in developing machine learning techniques for remote sensing data to support forest conservation and improve traffic to protect human health in India. INTEGRAL, which stands for INDia remoTE ImaGery aNALysis, is led by Carola-Bibiane Schönlieb.

You can find all the content at the [Plus website](#).

### NRICH Update

The NRICH outreach team is delighted to be supporting the [Cambridge Festival](#) again this year. The team will be leading four events during the Festival, so there should be something for all ages.

NRICH's Director Ems Lord will get things going with her talk [How to Lose a \\$billion: Technology's Most Expensive Mistakes](#) on Thursday 31 March from 6pm. On Saturday 2nd April, Liz Woodham and Charlie Gilderdale will be leading a workshop between 10.30 and 11.15am for [9-11 year-olds](#), followed by Claire Metcalfe and Charlie Gilderdale leading a workshop for [11-14 year-olds](#) between 12 and 12.45pm. Charlie and Claire will return between 4 and 5pm to lead their 'Trouble with Quizzles' workshop for [15-17 year-olds](#). Please feel free to share the dates and links with family and friends.

### UCU Industrial action 21 to 25 March 2022

UCU intends to hold a further five days of strike action in relation to pay, working conditions and pensions from Monday 21 to Friday 25 March 2022. A [participation form](#) is available for those taking part in the strikes on the University's [industrial action website](#), as is a range of guidance for staff, students and institutions.

## EVENTS

### UK Graduate Modelling Camp

12-15 July

The UK's Graduate Modelling Camp will take place this year Tuesday 12th July 2022 to Friday 15th July 2022. It will be an in-person event in Cambridge.

The Modelling Camp caters for **early career mathematicians**, usually those in the first and second years of their doctoral studies, who are keen to get hands-on modelling experience. It aims to provide students with experience of mathematical modelling under the guidance of experienced instructors and mentors. Modelling camp participants usually go on to attend the five-day European Study Group with Industry (ESGI). This year, the ESGI is being hosted by the University of Kent on the 18<sup>th</sup>-22<sup>nd</sup> July 2022.

The Newton Gateway to Mathematics in partnership with the University of Oxford and with Professors Chris Breward as the main academic organiser, are pleased to be facilitating this year's event. The challenges that students work on at the camp are inspired by real-world challenges that have arisen in industry or science. Starting with presentations from the mentors, the participants then form teams to work on each problem, with each group presenting their results at the end. Prizes courtesy of the IMA and Newton Gateway to Mathematics will be awarded for the two teams best able to demonstrate good understanding of their problem, who are able to apply the most appropriate mathematical techniques and effectively communicate their progress.

The camp is designed to promote a broad range of problem-solving skills, such as mathematical modelling & analysis, scientific computation & critical assessment of solutions. Further information and the link to register are available on the [event web page](#).

The deadline for registrations is **Friday 8th April 2022**. Places are limited and there will be a nominal place-holding fee of £25 for students whose applications are successful. **Participant accommodation and meals are fully funded.**

### Postdoc Welcome Event

20 April, 10am-11am, Postdoc Centre, Eddington

A must-attend in-person session with information tailored to postdocs in Cambridge, whether University-based or employed by Colleges or Research Institutions.

At this event, you will be given information about:

- Your contract
- Professional development and the Careers Service
- How to connect to the wider postdoc community at Cambridge

You will also meet representatives from various University services who may be helpful to you while you are working in Cambridge.

Book [here](#).

## GENERAL INFORMATION

### Disruption to Universal bus service

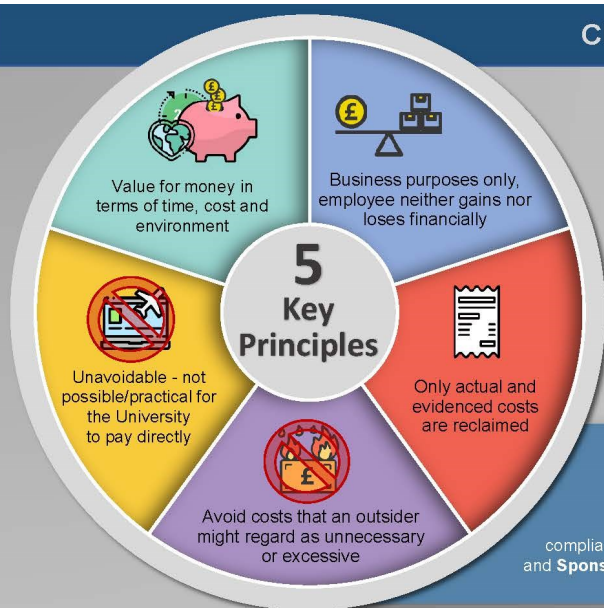
There may be some disruption to the Universal bus service this week as a result of a Covid outbreak among staff at Whippet, the service operator. Services may be cancelled at short notice, passengers may have to wait longer than usual, and buses may be more crowded than usual. Bus users are advised to check for service updates on Whippet's [Twitter](#) and/or [Facebook](#) accounts before traveling.

### Staff travel survey results available

Results from the staff travel survey conducted in October 2021 are now available. The Sustainability Team can provide tailored information on travel and working patterns by department and/or site on request: please contact [travel@admin.cam.ac.uk](mailto:travel@admin.cam.ac.uk).

The survey response rate was 32% of staff, which is the highest ever recorded. University wide, 54% of staff were in their workplace on an average day during the survey week in October. Of those travelling in to work, 27% were driving alone with 44% travelling in by bike. Car use is equivalent to that seen in 2016 with an 8% increase in cycle use compared to 2019 figures. [More results can be found on the Sustainability website](#).

## Claimants Quick Guide to Expenses



The University will reimburse costs incurred **wholly and necessarily** for University business, in compliance with **HMRC legislation** and **Sponsors' Terms and Conditions**

Travel sustainably: walk, cycle or use public transport where possible



Keep original **receipts** for all expenditure. Maintain mileage records.

Do not travel to regions /areas that the Foreign & Commonwealth Office have **advised against**

### Before you travel...

- UK trips: get prior verbal, written or "understood" authorisation
- Establish the mode of travel that provides best value for money
- Identify accommodation (within rates for UK)
- Can the University book direct for what you need?
- Using your own vehicle? Ensure your motor insurance has a business use clause
- Overseas trips require written authorisation and a risk assessment
- Register for free University Travel Insurance at time of booking

Transport services such as Uber permitted at department's discretion – undertake your own risk assessment before booking

Entertaining? Record the event purpose and details of all those attending

'Unregulated' accommodation such as Airbnb should be risk assessed and only considered when no alternative exists.

## Claimants Quick Guide to Expenses



### Making a claim

#### Use our approved forms or systems

Claim out-of-pocket expenses within **3** months

Detail the expense's... Declare...

- ☒ Nature
- ☒ Purpose & attendees
- ☒ Any advances
- ☒ Claim is true & accurate

Attach evidence:  
Supporting\_Evidence.pdf

Specify which **Account/Project code(s)** to use, if known

Forward to appropriate senior person in dept.

Approved claims will then be:  
1. Forwarded to Dept. Finance Team or central Shared Services  
2. Paid into your bank account within 10-14 days

[www.expenses.admin.cam.ac.uk](http://www.expenses.admin.cam.ac.uk)

- Link to Expense system and forms
- Mileage and subsistence rates
- Travel Insurance Portal
- Key Travel: travel management company
- University's Travel & Expenses policy

45p per mile\* <10,000  
25p per mile\* >10,000  
5p per passenger per mile\*  
24p per mile  
\* Irrespective of engine size

Actual, evidenced, UK-based expenditure per day up to...  
Rates effective from 1 Feb 2022

Breakfast	£10	Lunch	£10	Dinner	£25
Meals away from work	£35	Overnight stays	£120	Hotel extras	£150 London
Family / friends stay	£25	24h	£155	24h	£185 London

More at: [www.expenses.admin.cam.ac.uk/expense-rates/subsistence-rates](http://www.expenses.admin.cam.ac.uk/expense-rates/subsistence-rates)